

OLIVER FIELD WOODLAND CREATION PROPOSALS

Scottish Woodlands Ltd. have produced draft proposals for a woodland creation scheme at Oliver Field on behalf of the landowner.

The views of the local community are being sought via information sent to the Community Council and neighbours.

Context

The **Scottish Government** supports woodland creation as part of future land use in Scotland. This will contribute to:

- Fulfil targets on **Climate Change** (carbon sequestration – 18,000 ha of new woodland per annum by 2024/25)
- Fulfil targets on **Biodiversity**
- Help underpin a **sustainable supply of wood products** to the Scottish forestry industry

The Scheme will be progressed through the **Forestry Grant Scheme** and submitted to Scottish Forestry for their approval

Objectives

- Carbon Sequestration
- Productive Woodland Establishment
- Protect Existing Biodiversity Values
 - Native woodland expansion
 - Retention of open ground in important locations
- Protect Cultural Heritage Features of Value
- Deliver Wider Benefits
 - Access provision
 - Safeguard water quality

Design & Application Process

The design process has included specialist survey and assessment of:

- **Soils and Peat**

- All identified areas of deep peat over 50cm have been excluded from the planting area
- No ploughing is proposed as part of this application
- Further micro site surveying on plantable areas over peaty gley soils will be carried out prior to planting, and should further deep peat be identified at any stage, the proposals will be amended to safeguard these areas

- **Habitats, Birds and Animals**

- An independent specialist Habitats, Birds and Protected species survey has been carried out as part of this application
 - No black grouse were encountered within the site
 - No waders were encountered to be breeding within the site
 - Fence marking will be considered in relation to reducing black grouse collision, as the site is within a 2km of a historical lek at Kingledores
- Any habitats of identified regional and local interest will be protected and retained in open ground
- New habitats will be created, notably through establishment of new native and riparian woodlands and the removal of grazing on open areas within the woodland

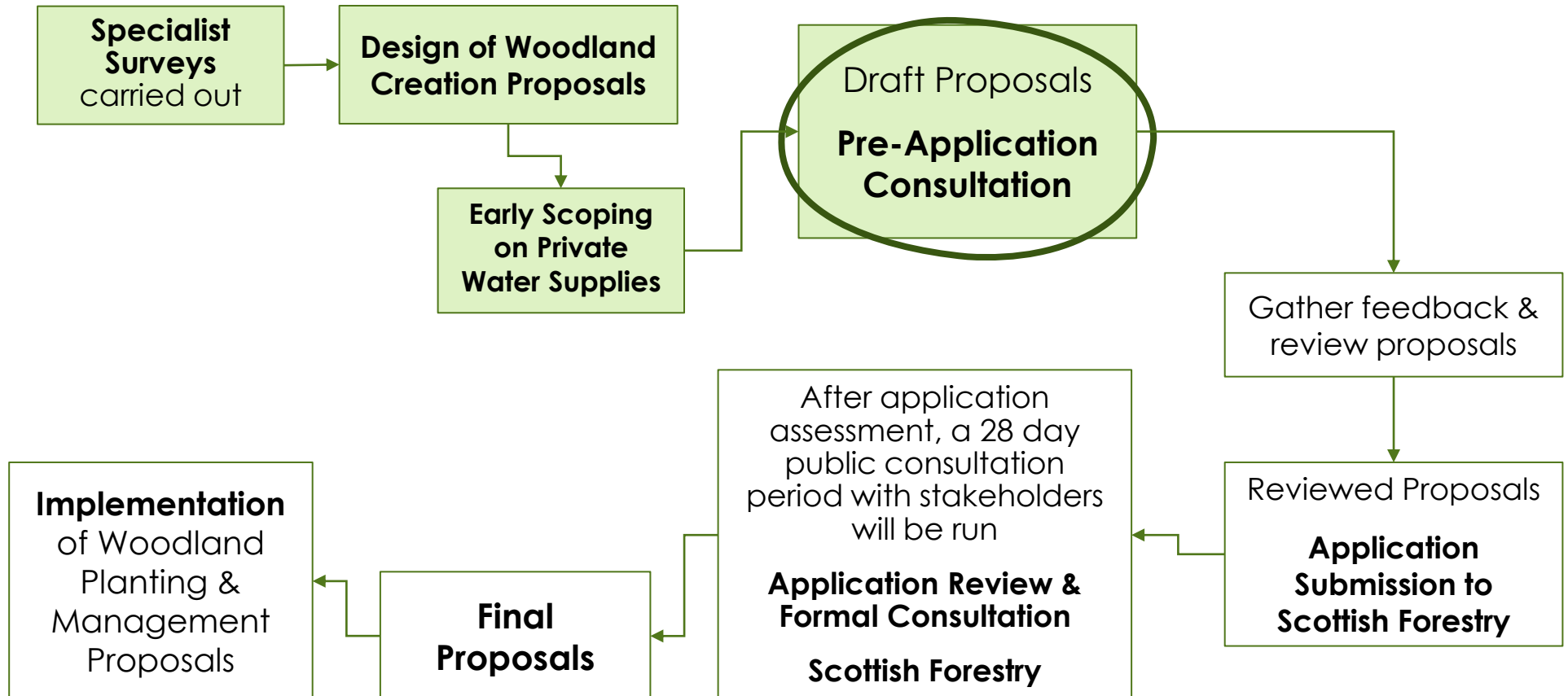
Design & Application Process

The design process has included specialist survey and assessment of:

- **Archaeology**
 - All identified features of interest will be protected as recommended by independent specialist report
- **Landscape**
 - Some key areas of the woodland, particularly to the bottom of the scree slopes, have been proposed as a mixture of low density native broadleaves and open ground to help fit the woodland in the landscape
 - The woodland has been designed to fit with the local topography and to include a range of woodland types and open ground
 - The site lies within the “Tweedsmuir Uplands” Special Landscape Area – 3D landscape representations of the future woodland have been carried out and are included in this consultation
- **Hydrology**
 - There are several private water supplies originating within Oliver Field. An independent Hydrology Report has been carried out as part of this application to identify potential impacts of the planting and necessary protection measures.
- **Early Neighbour Engagement**
 - Nearby residents whose private water supplies are directly affected by the proposals were consulted early on in the process, and the design has been refined as a result of the Hydrology Report

Copies of these specialist surveys are available to view at this consultation event.

Design & Application Process



Proposal Summary

Total Site Area	134 ha	100 %
Left in agriculture	15 ha	11 %

Within Woodland Perimeter Boundary

Planted	84 ha	71 %
Unplantable - scree, peat	13 ha	11 %
Open	22 ha	18 %

Total Planting Area	84 ha	100 %
Coniferous	63 ha	76 %
Broadleaved	20 ha	24 %

Proposal Summary

- Roughly **35%** of the proposal consists of **native broadleaved woodland and open ground**, significantly exceeding the requirements of the UK Forestry Standard.
- **All broadleaves will be of native species**, and these will be focused on land near watercourses, private water supply buffers and on the lower ground.
- Most of the coniferous element will be **Sitka spruce**, however **other species** such as Scots pine, Norway spruce and Noble fir will be used as the diverse conifer element in the more fertile lower slopes and more visible parts of the site.
- Views from **Nether Oliver Dod** have been kept open and will not be obstructed by the planting.
- Most of the planting will be protected with a **deer fence**, the alternative is to use a high amount of plastic tree shelters.
- The **Right of Responsible Access** will be exercised through the woodland, and self-closing gates for recreation access will be provided throughout the woodland.
- An unsurfaced informal footpath running from the Crook Inn, along the site's lower boundary and to the site entrance has been proposed as part of this application
- **Accessibility** to the site will be enhanced once the forest tracks are completed

Other Information

- **Timing**

- If approval is granted by Scottish Forestry, woodland establishment works would be likely to commence in 2022 and be substantially complete by 2024

- **Employment**

- There will be no net impact on agricultural employment, and there will be an increase in forestry employment

- **Access**

- Access tracks will be installed to support establishment and management of the woodland
- This track network will be upgraded to facilitate harvesting, likely 30-40 years after initial planting

- **Landscape**

- Visual representations of the future woodland have been attached to this consultation document

How to Comment

Your questions, comments and feedback on the proposals are welcome. Please also get in touch should you wish further information.

Mark Hamilton Landscape Services, 8 Kirkton Avenue, Bathgate, West Lothian EH48 1EN

Email: carlota@mhlandscapeservices.co.uk or mark@mhlandscapeservices.co.uk

A note of all comments received will be passed on to Scottish Forestry, along with a note of any design amendments proposed.

If you wish to copy Scottish Forestry into your correspondence, their contact details are:

Scottish Forestry, South Scotland Conservancy, Weavers Court, Forest Mill, Selkirk TD7 5NY (southscotland.cons@forestry.gov.scot)

All documents and maps can be found in:

<https://www.scottishwoodlands.co.uk/public-consultations>